

CHILD CARE CENTRE

823-825 BOTANY ROAD, ROSEBERY, NSW 2018

ELECTRICAL SERVICES

All dimensions to be verified on site prior to commencement of on-site work and/or off-site prefabrication. Figured dimension to be taken in preference to scaled dimensions. This drawing is copyright and remains the property of JHA Consulting Engineers. Reproduction in whole or part of these drawings without written consent constitutes an infringement of copyright.

REVISIONS / AMENDMENTS

Rev	Date	Description	Verified
A	12.11.15	TENDER ISSUE	J.S.
B	18.12.15	REVISED TENDER ISSUE	J.S.
C	14.01.16	REVISED TENDER ISSUE	J.S.

LIGHTING

- EXISTING RELOCATED LOW GLARE TROFFER FITTING CLEANED, TESTED AND RELAMPED.
- LED STRIP LIGHT WITH POLY CARBONATE LENS FOR OVER HEAD CUPBOARD. PROVIDE FOR FULL LENGTH OF RUN. VISIONLINE VL26 OR SIMILAR
- 18W RECESSED LED DOWN LIGHT PIERLITE DOT, 9100 C LED ROUND, 4000K, OR EQUIVALENT.
- 18W RECESSED LED DOWN LIGHT PIERLITE, 4000K, DSI DIMMING, OR EQUIVALENT.
- RECESSED LED DOWN LIGHT PIERLITE ECO LED, 4000K, IP44.
- LED WALL MOUNTED ADJUSTABLE FLOOD LIGHTS.
- CUSTOM PENDANT FITTING, SUPPLIED BY CLIENT.
- 31W LED CIRCULAR LUMINAIRE 440mm IN DIAMETER WITH OPAL DIFFUSER AND DIMMABLE GEAR, SUSPENDED 150mm FROM CEILING. TO BE SUPPLIED BY CLIENT.
- 58W LED CIRCULAR LUMINAIRE 640mm IN DIAMETER WITH OPAL DIFFUSER AND DIMMABLE CONTROL GEAR, SUSPENDED 100mm FROM CEILING. TO BE SUPPLIED BY CLIENT.
- 129W LED CIRCULAR LUMINAIRE 940mm IN DIAMETER WITH OPAL DIFFUSER AND DIMMABLE CONTROL GEAR, SUSPENDED 50mm FROM CEILING. TO BE SUPPLIED BY CLIENT.
- 60W OPAL GLASS, LARGE 50CM x25CM WIDE, PEAR PENDANT 22 LIGHTING, FLUORESCENT BULB.
- LED WALL MOUNTED ADJUSTABLE FLOOD LIGHT PIERLITE, GMR30MH
- 4 BLADE FAN, WHITE POLYMER BLADES, HUNTER PACIFIC REVOLUTION SHALL BE CONTROLLED BY SUITABLE COMMON WALL CONTROLLER

SWITCHING & CONTROLS

- SWITCH & SWITCH WIRE
CH = CHANNEL No.
D = DIMMER CONTROL (DSI DIMMABLE)
INT = INTERMEDIATE SWITCH
K = KEY OPERATED SWITCH
L = LARGE TOGGLE
TS = TIME SWITCHED
WP = WEATHERPROOF (IP66 RATED)
ZW = TWO WAY SWITCH
OR = OVERRIDE SWITCH
DSI = DENOTES DSI DIMMING
- 90° MOVEMENT DETECTOR
- 360° CEILING MOUNTED MOTION DETECTOR
MOVEMENT DETECTORS PASSIVE INFRA RED UNLESS OTHERWISE NOTED.
MW = MICROWAVE MOVEMENT SENSOR
PIE = MULTI SENSOR (DAYLIGHT & MOVEMENT)
C = CORRIDOR TYPE
Z = ZONE No.
PZ = PERIMETER ZONE No.
DP = DENOTES DOUBLE POLE.
- TOP CONTACT No.
 BOTTOM CONTACT No. } CONTACTOR CONTROLLED CIRCUIT
- DENOTES CIRCUIT TO BE CONTROLLED BY TIMER SWITCH AND PE CELL.

LIGHTING NOTES

UNLESS OTHERWISE NOTED
 - ALL LINEAR FLUORESCENT LAMPS TO BE TRIPHOSPHOR >CR80.
 - COLOUR TEMPERATURE TO BE 4000K.
 - ALL CONTROL GEAR TO BE MIN. A2 TYPE SPECIFICATION ELECTRONIC WITH NO MORE THAN 0.5mA EARTH LEAKAGE.
 - NUMBER OF BALLASTS PER CIRCUIT SHALL NOT EXCEED 18 FOR EXISTING T8, 25 FOR NEW T5 INSTALLATION

EMERGENCY & EXIT LIGHTING

- LED EXIT SIGN. COMPLETE WITH BATTERY PACK IN SUSTAINED MODE WITH DIRECTIONAL ARROW WHERE REQUIRED
- LED CEILING RECESS MOUNTED NON-MAINTAINED EMERGENCY LUMINAIRE COMPLETE WITH EMERGENCY BATTERY PACK. REFER ELECTRICAL SPECIFICATION FOR MONITORING REQUIREMENTS.
- LED SURFACE MOUNTED NON-MAINTAINED EMERGENCY LUMINAIRE. REFER ELECTRICAL SPECIFICATION FOR MONITORING REQUIREMENTS.
- 2x35W NON-MAINTAINED SURFACE MOUNTED EMERGENCY FLOOD LIGHT COMPLETE WITH ADJUSTABLE HEADS, EXTRUDED ALUMINUM AND POLYCARBONATE CONSTRUCTION. REFER ELECTRICAL SPECIFICATION FOR MONITORING REQUIREMENTS.

POWER

- SINGLE 10A SWITCHED GPO
- DOUBLE 10A SWITCHED GPO
- SINGLE SOCKET SWITCHED OUTLET WITH FLAT PINS
- ELECTRICAL CONNECTION UNIT WITH ISOLATOR
- 3 PHASE SOCKET OUTLET WITH ISOLATOR
- DISTRIBUTION BOARD
- EXISTING DISTRIBUTION BOARD
- MECHANICAL SWITCHBOARD, BY MECHANICAL TRADE
- CONTROL PANEL
- CIRCUIT DESIGNATION
P - DENOTES POWER
L - DENOTES LIGHTING
E - DENOTES ESSENTIAL (EXCEPT FIRE SAFETY SERVICES, REFER NOTES)
N - DENOTES NON-ESSENTIAL
- DISTRIBUTION BOARD NAME
H - DENOTES HOUSE BOARD
T - DENOTES TENANT BOARD
- STARTER SOCKET FOR SOFT WIRING SYSTEM
- 3 CHANNEL SKIRTING DUCT. COLOUR TO ARCHITECTS SELECTION.
- CONDUIT
- POWER CABLE BASKET, CABLE CAGE SYSTEMS OR EQUAL
- ELECTRICAL DUCT ROUTE

COMMUNICATIONS

- TELEPHONE CONNECTION
- RJ 45 DATA OUTLET WITH UTP CABLING TO COMMS RACK
No. INDICATES NUMBER OF SOCKETS
- PAY TV OUTLET - F TYPE CONNECTOR
- TV OUTLET WIRED TO MATV SYSTEM.
- TELECOMMUNICATIONS RACK
- MAIN DISTRIBUTION FRAME.
- COMMS CABLE TRAY
- RECESSED CEILING SPEAKER AUDIO/PA
- SPEAKER
- COMMUNICATIONS PIT WITH HEAVY DUTY LID
No. INDICATES TYPE
- COMMUNICATIONS DUCT ROUTE

SECURITY

- OVERRIDE SWITCH TO DOOR MAG LOCKS HOUSED IN METAL FERRE AT 1800mm AFFL.
- MAGNETIC REED SWITCH.
- ELECTRIC DOOR STRIKE COMPLETE WITH TONGUE SENSOR AND REED SWITCH (ELECTRONIC STRIKE SUPPLIED WITH DOOR HARDWARE).
- MAGNETIC DOOR LOCK WITH REED SWITCH (PROVIDE TO DOOR HARDWARE PROVIDER).
- INTERCOM STATION
- INTERCOM HANDSET WITH DOOR RELEASE PUSH BUTTON
- PROXIMITY TYPE CARD READER.
- ALPHANUMERIC KEYPAD INTERFACED TO ACCESS CONTROL SYSTEM.
- ACCESS WC CALL ASSIST PUSH BUTTON
- BREAK GLASS EMERGENCY DOOR RELEASE
- DURESS ALARM PUSH BUTTON
- ACCESS CONTROL DOOR RELEASE PUSHBUTTON @ 1200mm AFFL.
- 360° INFRARED PIR SENSOR. } P1 DENOTES PASSIVE INFRA RED
M DENOTES MICROWAVE
180° INFRARED PIR SENSOR. } M NUMBER DENOTES MODE OF OPERATION
- REX SENSOR.
- SECURITY PANELS (ACCESS CONTROL, INTRUDER DETECTION, INTERCOM)
- CCTV LCD COLOUR MONITOR, 22 INCH U.N.O. COMPLETE WITH ADJUSTABLE CEILING MOUNTING BRACKET.
- COLOUR CCTV CAMERA IN WEATHERPROOF DOME ENCLOSURE COMPLETE WITH WALL BRACKET INSTALLED AT 4000mm AFFL.
- COLOUR CCTV FIXED CAMERA COMPLETE IN VANDAL PROOF DOME ENCLOSURE WITH MOUNTING BRACKET
MP - DENOTES MEGA PIXEL
W - WIDE ANGLE LENS
9:16 - DENOTES CORRIDOR FORMAT
- ALARM SCREAMER TO ACTIVATE WHEN DOOR IS OPENED
- DURESS ALARM STROBE LIGHT & SIREN (ADJUSTABLE VOLUME), LABELLED 'DURESS ALARM'
- BIOMETRIC SECURITY SYSTEM FINGER PRINT DOOR ACCESS
- TIME AND ATTENDANCE SCANNER AS PART OF BIOMETRIC SECURITY SYSTEM BY PEOPLE KEY
- BLUE STROBE LIGHT TO ACTIVATE WHEN DOOR IS OPEN

FIRE LEGEND

- ADDRESSABLE SMOKE DETECTOR.
- CONCEALED SMOKE DETECTOR.
- THERMAL DETECTOR.
- CONCEALED THERMAL DETECTOR.
- MANUAL CALL POINT. BREAK GLASS ALARM
- MAGNETIC DOOR HOLD OPEN DEVICE COMPLETE WITH WALL MOUNTED MAGNET EXTENSION ARM AS REQUIRED.
- CEILING RECESS MOUNTED BOWS SPEAKER.
- SURFACE MOUNTED BOWS SPEAKER.
- MANUAL CALL POINT
- WEATHERPROOF, IP56 EXTERNAL VISUAL ALARM STROBE LIGHT
- ADDRESSABLE FIRE INDICATOR PANEL
- WEATHERPROOF IP56 HORN TYPE BOWS SPEAKER, WALL MOUNTED

ABBREVIATIONS

- 1N - 1 PHASE + NEUTRAL
- 3N - 3 PHASE + NEUTRAL
- 2W - 2 WAY
- AB - ABOVE BENCH
- AFFL - ABOVE FINISHED FLOOR LEVEL
- BWU - BOILING WATER UNIT
- C - CLEANER
- CAP - GPO WITH CAPTIVE OUTLET
- CM - CEILING MOUNTED
- CS - CEILING SPACE
- CT - COOKING TOP
- D - DOUBLE SIDED FITTING
- DW - DISHWASHER
- FR - FRIDGE
- J - MOUNTED ON JOINERY
- MW - MICROWAVE
- OR - LIGHTING OVERRIDE SWITCH
- OV - ELECTRIC OVEN
- S - SURFACE MOUNTED
- SK - MOUNTED ON SKIRTING DUCT
- T - 0-2HR ADJUSTABLE ELECTRONIC TIMER SWITCH
- UB - UNDER BENCH
- V - VANDAL RESISTANT HOUSING
- W - MOUNTED ON WALL DUCT
- WP - IP56 RATED

GENERAL NOTES

- GENERAL
- ALL WORK TO BE IN ACCORDANCE WITH SAA WIRING RULES, AS 3000
 - DRAWINGS MUST BE READ IN CONJUNCTION WITH THE ELECTRICAL SPECIFICATION.
 - MARK ALL EQUIPMENT INCLUDING SWITCHES, POWER OUTLETS, ETC., WITH DISTRIBUTION BOARD NUMBER/CIRCUIT NUMBER AND DESTINATION AREAS.
 - LOCATIONS OF ELECTRICAL EQUIPMENT SHOWN ARE INDICATIVE ONLY. CO-ORDINATE FINAL ELECTRICAL EQUIPMENT LOCATIONS WITH ALL OTHER SERVICES DETAILS AND TRADE DISCIPLINES ON SITE AND WITH REFERENCE TO ARCHITECTURAL, HYDRAULIC AND MECHANICAL DRAWINGS.
 - ALL OUTLETS IN WET AREAS - CO-ORDINATE EXACT LOCATIONS WITH ARCHITECTURAL WET AREA DETAILS.
 - ALL OUTLETS IN JOINERY UNITS, CO-ORDINATE EXACT LOCATIONS WITH ARCHITECTURAL JOINERY AREA DETAILS.
 - PENETRATIONS THROUGH FIRE RATED WALLS AND FLOORS ARE TO BE SEALED WITH FIRE STOPPING MATERIAL EQUAL TO THE LEVEL OF PROTECTION OF THE SURROUNDING BARRIER.
 - PLACE ALL CONTROLS WITHIN DISTRIBUTION BOARD, UNO.
 - ENSURE THE POSITION OF THE LIGHT SWITCHES, ETC ARE TO BE POSITIONED TOGETHER BY THE ENTRY DOOR OF EACH ROOM, UNLESS OTHERWISE INSTRUCTED, AT 1100mm AFFL.
 - ALL GPO CIRCUITS PROTECTED BY 20A 30MA RCD'S SINGLE POLE TYPE
 - THE DRAWINGS SHALL BE READ IN CONJUNCTION WITH THE ELECTRICAL SERVICES SPECIFICATION.
 - ENSURE THE POSITION OF THE LIGHT SWITCHES, ETC ARE TO BE POSITIONED TOGETHER BY THE ENTRY DOOR OF EACH ROOM, UNLESS OTHERWISE INSTRUCTED, AT 1100mm AFFL.
 - ALL COMMUNICATIONS SPECIFICATION PRIOR TO TENDERING & CARRYING OUT ANY WORK. VARIATIONS AS A RESULT OF NOT DOING SO WILL NOT BE ACCEPTED
 - ALL SWITCHBOARDS & COMMUNICATION SYSTEMS SHALL BE SIZED TO FIT SPACES PROVIDED.
 - THE ELECTRICAL CONTRACTOR SHALL PROVIDE 24HOURS / 365 DAYS PROGRAMMABLE TIMER TO ALL BOILING WATER UNITS TO COMPLY WITH BCA SECTION J REQUIREMENTS.
- LIGHTING
- WHERE LIGHT SWITCH WIRE LINES ARE NOT SHOWN, SWITCH FITTINGS BY SWITCH(ES) ADJACENT TO ROOM ENTRANCE DOOR. PROVIDE MINIMUM OF ONE LIGHT SWITCH TO OPERATE ALL LIGHTS WITHIN EACH ROOM
 - MOUNT EXIT LIGHTS ON CEILING ONLY. CHAIN SUSPEND AS REQUIRED TO ABOVE DOOR HEIGHT TO AS2293
 - PROVIDE 30mA RCD PROTECTION TO ALL LIGHTING & POWER CIRCUITS AS PER AS3000
 - FLUORESCENT LIGHTING SWITCHED BY MOTION DETECTORS TO HAVE WARM START BALLASTS
 - COLOUR OF ALL LIGHT FITTINGS, TRIMS, LENSES TO BE APPROVED BY THE ARCHITECT.
 - ALL LIGHT FITTINGS SUPPLIED WITH, LAMPS, ELECTRONIC BALLASTS, ELECTRONIC TRANSFORMERS.

POWER

- UNLESS ARCHITECTURAL JOINERY DRAWINGS SHOW OTHERWISE, MOUNT ALL OUTLETS MARKED "AB" AT 150 TO BOTTOM OF OUTLET ABOVE BENCH TOP. REFER TO ARCHITECTURAL JOINERY DWGS FOR EXACT LOCATIONS.
- MOUNT OUTLETS LOCATED NEAR SINKS AND TUBS, OUTSIDE THE 'DAMP AREAS RESTRICTED ZONE' AS REQUIRED BY AS 3000.
- INSTALL AN ISOLATOR ADJACENT TO ALL EQUIPMENT THAT IS NOT IN THE IMMEDIATE VICINITY OF ITS CONTROL PANEL OF EQUIPMENT AS REQUIRED BY AS 3000
- PROVIDE COMBINED RCD/CIRCUIT BREAKER FOR ALL POWER AND LIGHTING CIRCUITS THROUGHOUT AS DETAILED IN SPECIFICATION AND AS 3000:2007.
- AVOID BACK TO BACK OUTLETS IN ALL ACOUSTIC & FIRE RATED WALLS.

CABLE WAYS

- SEPARATE COMMUNICATIONS CABLING FROM POWER CABLING BY MINIMUM OF 300mm, EXCEPT WHERE ENCLOSED IN METAL DUCT OR METAL CONDUIT.

EARTHING

- INSTALL EQUIPOTENTIAL BONDING TO METALLIC PIPING, CABLE TRAYS, METAL DUCTS, COMMUNICATIONS EARTHING SYSTEMS AND OTHER METALLIC SYSTEMS.

DRAWING LIST

- E000 - COVER SHEET, LEGEND OF SYMBOLS, GENERAL NOTES AND DRAWING LIST.
- E100 - GROUND FLOOR - LIGHTING AND FIRE DETECTION LAYOUT
- E101 - FIRST FLOOR - LIGHTING AND FIRE DETECTION LAYOUT
- E200 - GROUND FLOOR - POWER, COMMUNICATIONS AND SECURITY LAYOUT
- E201 - FIRST FLOOR POWER, COMMUNICATIONS AND SECURITY LAYOUT

ARCHITECT

SBarchitects

189 Kent Street
 Sydney, NSW 2000
www.sbarchitects.com.au

CONSULTANT

JHA

Level 3, 146 Arthur Street,
 North Sydney
 NSW 2060
 Australia

+61 (02) 9437 1000
general@jhaengineers.com.au
www.jhaservices.com

PROJECT

CHILD CARE CENTRE
 823-825 BOTANY ROAD
 ROSEBERY, NSW 2018
 LOT 1 DP838607

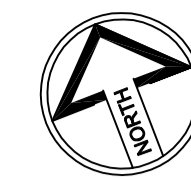
TITLE

ELECTRICAL SERVICES
 COVER SHEET, LEGEND OF
 SYMBOLS, GENERAL NOTES &
 DRAWING LIST

TENDER ISSUE
 NOT TO BE USED FOR CONSTRUCTION

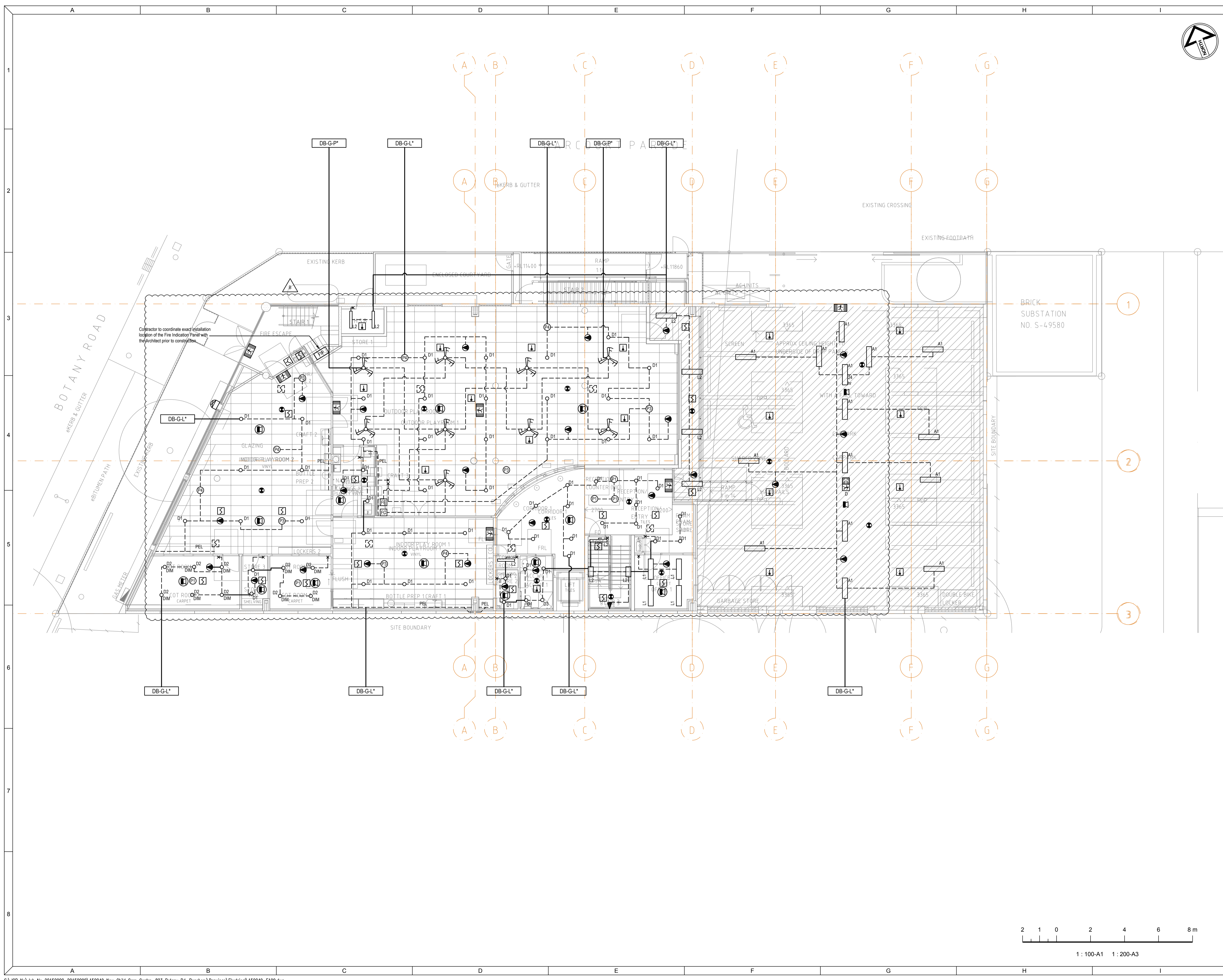
DRAWN	CHECKED	APPROVED	SCALE @ A1
K.M.	J.S.	M.E.	N.T.S.
JOB No.	DRAWING No.	REV	
150049	E000	C	

DESIGN & CONSTRUCT DOCUMENT



All dimensions to be verified on site prior to commencement of on-site work and/or off-site prefabrication. Figured dimension to be taken in preference to scaled dimensions. This drawing is copyright and remains the property of JHA Consulting Engineers. Reproduction in whole or part of these drawings without written consent constitutes an infringement of copyright.

REVISIONS / AMENDMENTS			
Rev	Date	Description	Verified
A	12.11.15	TENDER ISSUE	J.S.
B	14.01.16	REVISED TENDER ISSUE	J.S.



ARCHITECT
SBarchitects
 189 Kent Street
 Sydney, NSW 2000
 www.sbarchitects.com.au

CONSULTANT

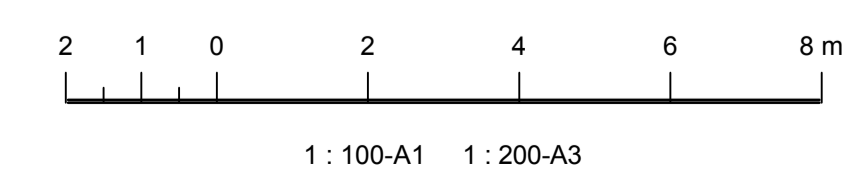
 Level 3, 146 Arthur Street,
 North Sydney
 NSW 2060
 Australia
 +61 (02) 9437 1000
 general@jhaengineers.com.au
 www.jhaservices.com

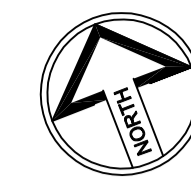
PROJECT
CHILD CARE CENTRE
 823-825 BOTANY ROAD
 ROSEBERY, NSW 2018
 LOT 1 DP838607

TITLE
ELECTRICAL SERVICES
 GROUND FLOOR
 LIGHTING AND FIRE DETECTION
 SERVICES LAYOUT

TENDER ISSUE
 NOT TO BE USED FOR CONSTRUCTION

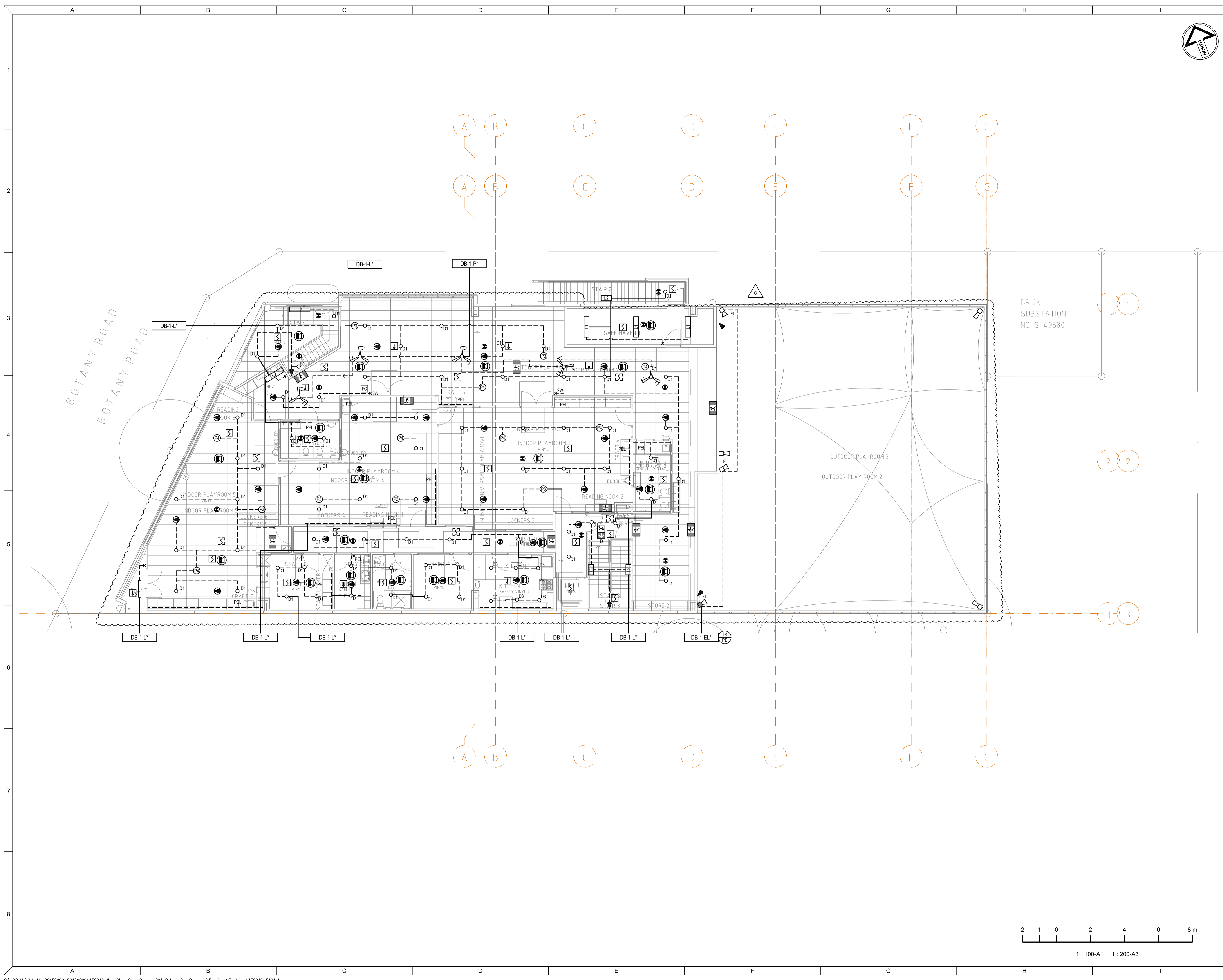
DRAWN	CHECKED	APPROVED	SCALE @ A1
K.M.	J.S.	M.E.	1:100
JOB No.	DRAWING No.	REV	
150049	E100	B	





All dimensions to be verified on site prior to commencement of on-site work and/or off-site prefabrication. Figured dimension to be taken in preference to scaled dimensions. This drawing is copyright and remains the property of JHA Consulting Engineers. Reproduction in whole or part of these drawings without written consent constitutes an infringement of copyright.

REVISIONS / AMENDMENTS			
Rev	Date	Description	Verified
A	12.11.15	TENDER ISSUE	J.S.
B	18.12.15	REVISED TENDER ISSUE	J.S.
C	14.01.16	REVISED TENDER ISSUE	J.S.



ARCHITECT
SBarchitects
 189 Kent Street
 Sydney, NSW 2000
www.sbarchitects.com.au

CONSULTANT

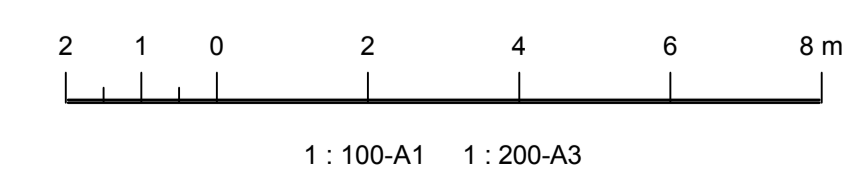
 Level 3, 146 Arthur Street,
 North Sydney
 NSW 2060
 Australia
 +61 (02) 9437 1000
general@haengineers.com.au
www.jhaservices.com

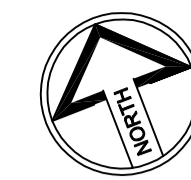
PROJECT
CHILD CARE CENTRE
 823-825 BOTANY ROAD
 ROSEBERY, NSW 2018
 LOT 1 DP838607

TITLE
ELECTRICAL SERVICES
 LEVEL 1
 LIGHTING AND FIRE DETECTION
 SERVICES LAYOUT

TENDER ISSUE
NOT TO BE USED FOR CONSTRUCTION

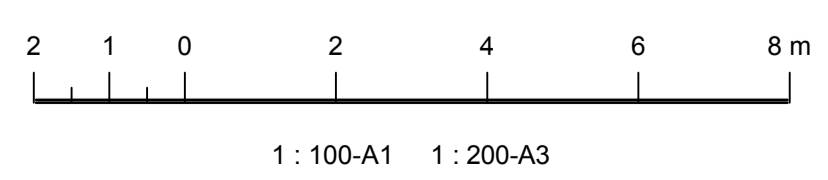
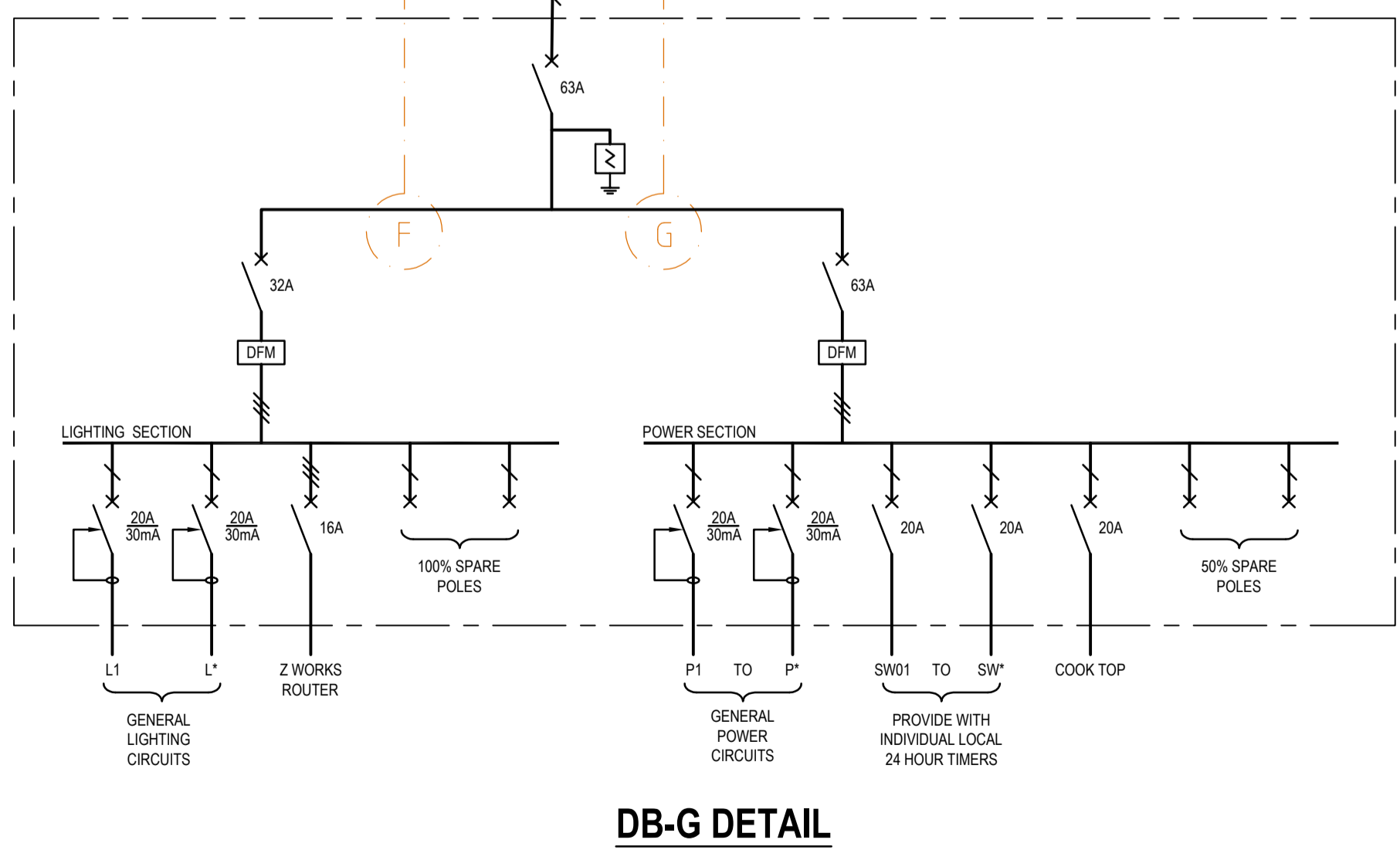
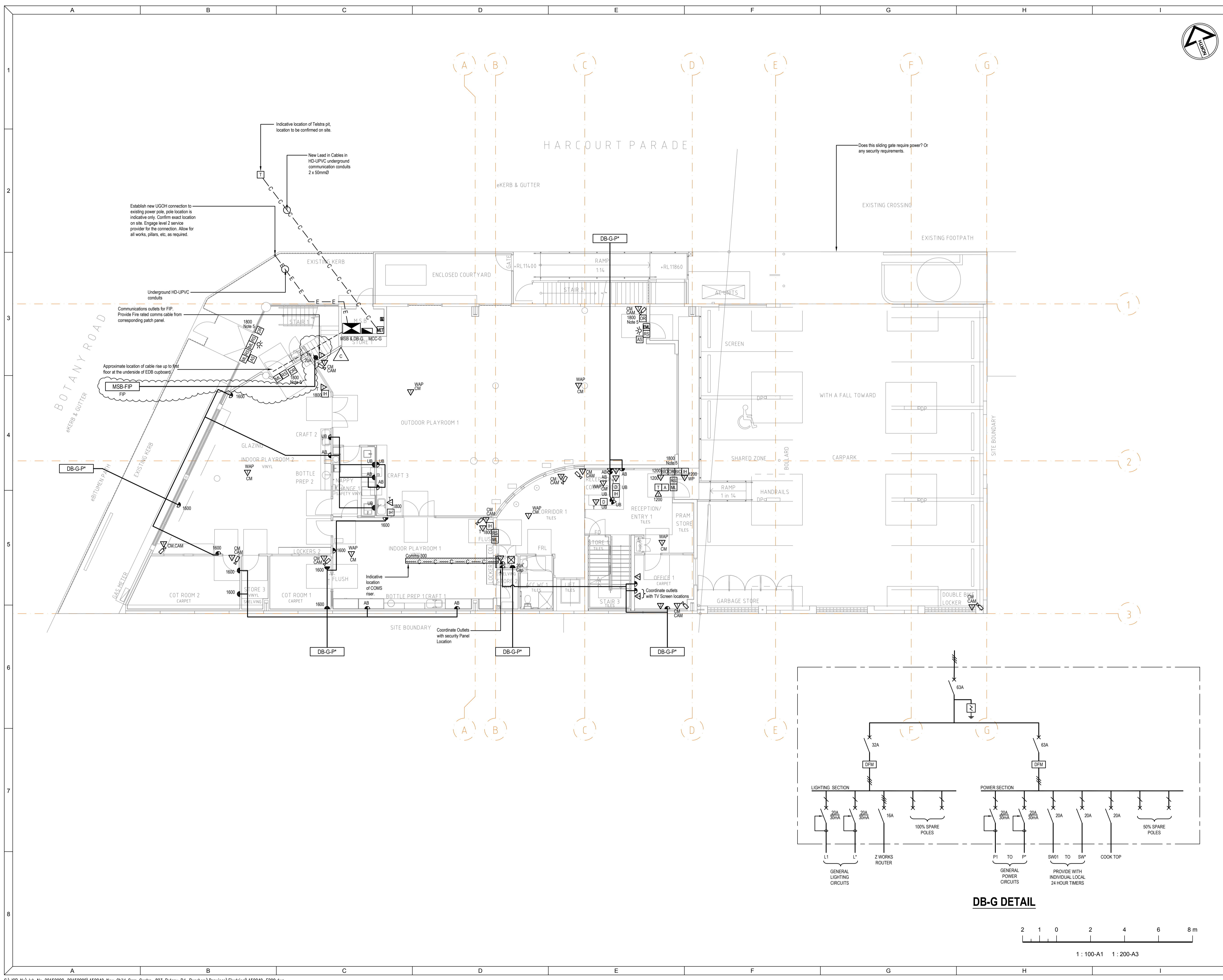
DRAWN	CHECKED	APPROVED	SCALE @ A1
K.M.	J.S.	M.E.	1:100
JOB No.	DRAWING No.	REV	
150049	E101	C	





All dimensions to be verified on site's prior to commencement of on-site work and/or off-site prefabrication. Figured dimension to be taken in preference to scaled dimensions. This drawing is copyright and remains the property of JHA Consulting Engineers. Reproduction in whole or part of these drawings without written consent constitutes an infringement of copyright.

REVISIONS / AMENDMENTS			
Rev	Date	Description	Verified
A	12.11.15	TENDER ISSUE	J.S.
B	18.12.15	REVISED TENDER ISSUE	J.S.
C	14.01.16	REVISED TENDER ISSUE	J.S.



ARCHITECT
SBarchitects

189 Kent Street
Sydney, NSW 2000
www.sbarchitects.com.au

CONSULTANT



Level 3, 146 Arthur Street,
North Sydney
NSW 2060
Australia
+61 (02) 9437 1000
general@jhaengineers.com.au
www.jhaservices.com

PROJECT
CHILD CARE CENTRE
823-825 BOTANY ROAD
ROSEBERY, NSW 2018
LOT 1 DP838607

TITLE
ELECTRICAL SERVICES
GROUND FLOOR
POWER, COMMS AND SECURITY
LAYOUT

TENDER ISSUE
NOT TO BE USED FOR CONSTRUCTION

DRAWN	CHECKED	APPROVED	SCALE @ A1
K.M.	J.S.	M.E.	1:100
JOB No.	DRAWING No.	REV	
150049	E200	C	