

### LIGHT FITTING SCHEDULE

O.A.E. OR APPROVED EQUIVALENT UNO - UNLESS NOTED OTHERWISE

REF	SYMBOL	MANUFACTURER	DESCRIPTION	LAMP
A1		EAGLE LIGHTING FLEXTROFFER	LINEAR TS CEILING RECESSED LUMINAIRE WITH OPAL DIFFUSER. COMPLETE WITH EEI=A2 CONTROL GEAR.	2X28 W T5 840
B1		EAGLE LIGHTING BATTEN DIFFUSED	LINEAR TS SURFACE MOUNTED LUMINAIRE WITH OPAL DIFFUSER. IP65 RATED. COMPLETE WITH EEI=A2 CONTROL GEAR.	1X28 W T5 840
B2		EAGLE LIGHTING BATTEN DIFFUSED	LINEAR TS SURFACE MOUNTED LUMINAIRE WITH OPAL DIFFUSER. IP65 RATED. COMPLETE WITH EEI=A2 CONTROL GEAR.	2X28 W T5 840
C1		ELS LIGHTING ADL150.2000.63.4000	RECESSED FIXED LED DOWN LIGHT. REMOTE ELECTRONIC DRIVER. WHITE FINISH. 1489 lm 60° BEAM ANGLE.	27.6 W LED 4000 K
C2		ELS LIGHTING ADL110.XIM7.8040.61	RECESSED FIXED LED DOWN LIGHT. REMOTE ELECTRONIC DRIVER. WHITE FINISH. 1708 lm	23.5 W LED 4000 K
D1		ELS LIGHTING ADL110.XIM7.8040.61S	CEILING MOUNTED LED DOWN LIGHT. INTEGRAL ELECTRONIC DRIVER. WHITE FINISH. 1708 lm 55° BEAM ANGLE.	23.5 W LED 4000 K
E1		CLEVERTRONICS LIFE LIGHT	CEILING RECESSED EMERGENCY LIGHT WITH LITHIUM-ION BATTERY AND D50 CLASSIFICATION.	LED
E2		CLEVERTRONICS LIFE LIGHT	SURFACE MOUNTED EMERGENCY LIGHT WITH LITHIUM-ION BATTERY AND D50 CLASSIFICATION.	LED
EX1		CLEVERTRONICS LIFE FIT	SURFACE MOUNTED EXIT LIGHT WITH PICTOGRAPH AND LITHIUM-ION BATTERY. 24m VIEWING DISTANCE.	LED
EX2		CLEVERTRONICS LIFE FIT	ROD SUSPENDED EXIT LIGHT WITH PICTOGRAPH AND LITHIUM-ION BATTERY. 24m VIEWING DISTANCE.	LED
F		BEGA 6450	EXTERNAL CEILING MOUNTED DOWNLIGHT IP65. 1150 lm	10.5 W LED 4000K
G		BEGA 2652	EXTERNAL WALL MOUNTED LED LUMINAIRE. 960 lm	8.4 W LED 4000K
H		TBC	INTERNAL WALL MOUNTED LED LUMINAIRE TO ILLUMINATE CORRIDOR. HIGH LEVEL INTEGRAL ELECTRONIC CONTROL GEAR. 1500 LUMEN OUTPUT.	25 W LED 4000K
K1		PEETA PENDANT	75mm EXTRA LARGE MODERN NATURAL TIMBER PENDANT WITH OSRAM DIMMABLE LED LAMP	9 W E27 LED 2700K
K2		CAPRIO PENDANT	LARGE ASHWOOD SHADE PENDANT WITH OSRAM DIMMABLE LED LAMP	9 W E27 LED 2700K
K3		BEACON KIEL PENDANT	KIEL 580mm NATURAL WOODEN PENDANT WITH OSRAM DIMMABLE LED LAMP	9 W E27 LED 2700K
K4		BEACON MALMO PENDANT	MALMO 1 LIGHT 350mm PENDANT IN NATURAL WOOD WITH OSRAM DIMMABLE LED LAMP	9 W E27 LED 2700K
K5		ATLANTIS PENDANT	TIMBER VENEER 1 LIGHT 500mm PENDANT WITH OSRAM DIMMABLE LED LAMP	9 W E27 LED 2700K
K6		MERCATOR LIGHTING	TREASURE 1 LT LARGE PENDANT MP363L WITH OSRAM DIMMABLE LED LAMP	9 W E27 LED 2700K
P		BEGA 8260	POLE TOP LUMINAIRE WITH SYMMETRICAL BEAM. MOUNTING HEIGHT 4 m	33 W LED 4000K
Q		BEGA 9491	POLE TOP LUMINAIRE WITH ASYMMETRICAL BEAM. MOUNTING HEIGHT 4m	25.2 W LED 4000K

### POWER SYMBOLS

- SINGLE POWER SOCKET OUTLET. CLIPSALE 2000 SERIES / BVL SERIES
- DOUBLE POWER SOCKET OUTLET. CLIPSALE 2000 SERIES / BVL SERIES
- DIRECT CONNECTION TERMINATED AT AN ISOLATOR WHERE "n" DENOTES THE NUMBER OF PHASES OF THE CIRCUIT.
- 20A STARTER SOCKET
- LINK BOX MOUNTED AT HIGH LEVEL TO ALLOW FUTURE DISTRIBUTION BOARD RELOCATION.
- DISTRIBUTION BOARD
- MAIN SWITCHBOARD
- EXTERNAL POWER CONDUIT
- EXTERNAL COMMS CONDUIT
- 300mm CABLE TRAY POWDER COATED BLACK
- BUSDUCT/SURFACE MOUNTED CONDUIT
- CMS ELECTRACOM TITAN FLOOR BOX. SERVICES WITHIN FLOOR BOX AS SHOWN ON LAYOUT.
- TWO CHANNEL WALL DUCT 150mm HEIGHT.
- PHOTOVOLTAIC PANELS.
- PV SYSTEM INVERTER.
- METER PANEL.
- POWER SUPPLY TO OPERABLE WINDOWS
- CONTROL LOCATION FOR OPERABLE WINDOWS

### DRAWING SCHEDULE

- E-001 - LEGEND AND LIGHT FITTING SCHEDULE
- E-100 - LIGHTING AND FIRE DETECTION LAYOUT
- E-200 - POWER AND COMMS LAYOUT
- E-500 - SINGLE LINE DIAGRAM AND DETAILS SHEET

### LIGHTING SYMBOLS

- LIGHT SWITCH PANEL
- LIGHT SWITCH AND SWITCHWIRE
- MOTION SENSOR - CLIPSALE 753R
- CONTROL SHOWN ON CIRCUIT SCHEDULE HAS THE FOLLOWING DENOTATION:
- A - AUTO, CONTROL FROM FLOOR LSP
- L - LOCAL, CONTROL FROM ROOM AV PANEL
- W - WALL, CONTROL FROM WALL SWITCH ADJACENT TO DOOR
- WD - WALL, CONTROL FROM PUSH-DIM SWITCH ADJACENT TO DOOR
- M - MOTION, CONTROL FROM MOTION SENSOR WITHIN ROOM
- TC - TIME LOCK, PROVIDE TIME CLOCK WITHIN DISTRIBUTION BOARD
- WS - WINDOW SASHES

### COMMUNICATIONS SYMBOLS

- INTERCOM OUTLET. EXT - DENOTES EXTERNAL UNIT INT - DENOTES INTERNAL UNIT
- NEW DOUBLE RJ45 & DATA OUTLET CABLED BACK TO NEAREST COMMUNICATIONS ROOM.
- S - DENOTES OUTLET FOR DISPLAY SCREEN
- T - DENOTES OUTLET FOR SECURITY PHONE
- W - DENOTES OUTLET FOR WIFI MOUNTED ON CEILING
- MAIN DISTRIBUTION FRAME
- INTERMEDIATE DISTRIBUTION FRAME
- COMMUNICATIONS RACK WHERE "n" DENOTES RACK UNIT SIZE
- COMMUNICATIONS CONDUIT CHASED IN SLAB CONDUIT REQUIREMENTS - 2x32mm COMMS CONDUIT+1x20mm POWER CONDUIT

### DRY FIRE DETECTION SYMBOLS

- SMOKE DETECTOR
- CONCEALED SMOKE DETECTOR
- THERMAL DETECTOR
- FIRE INDICATOR PANEL
- SUB-FIRE INDICATOR PANEL
- BUILDING OCCUPANCY WARNING SYSTEM PANEL
- SMOKE DETECTOR CONCEALED IN DUCT
- WARDEN INTERCOM POINT
- CEILING MOUNTED EWIS SPEAKER
- WALL MOUNTED EWIS SPEAKER
- MAGNETIC HOLD OPEN DEVICE

### SITE RETICULATION

- PROPRIETARY POWER PIT (600x600x900 mm).
- PROPRIETARY COMMUNICATION PIT (600x600x900 mm).
- EXISTING TELSTRA PIT
- OVERHEAD POWER NEW SERVICE MAINS.
- CONCRETE ENCASED PART OF THE CONDUIT RUN FOR ROAD CROSSING.
- 100 mm DIA HD PVC POWER CONDUIT.
- 100 mm DIA PVC COMMUNICATIONS CONDUIT.

### EQUIPMENT:

- AWN DENOTES SHADE STRUCTURE AWNING MOTOR
- BWU DENOTES BOILING WATER UNIT
- CWU DENOTES COLD WATER UNIT
- CM DENOTES COFFEE MACHINE
- DW DENOTES DISHWASHER
- EF DENOTES EXHAUST FAN SWITCH
- F DENOTES CEILING FAN
- FDT FIBRE DISTRIBUTION TERMINAL (NBN)
- FR DENOTES FRIDGE
- HD DENOTES HAND DRYER
- MW DENOTES MICROWAVE OVEN
- OV DENOTES OVEN
- SP DENOTES SPARE
- ST DENOTES STOVE TOP
- VM DENOTES VENDING MACHINE

### SINGLE LINE SYMBOLS

- AUTOMATIC CIRCUIT BREAKER
- CONTACTOR (NORMALLY CLOSED)
- CONTACTOR (NORMALLY OPEN)
- RESIDUAL CURRENT BREAKER WITH OVERLOAD (RCBO)
- LOAD BREAKER SWITCH
- SINGLE PHASE
- THREE PHASE
- FUSE
- TRANSFORMER
- KILOWATT HOUR METER
- CURRENT TRANSFORMER
- CONTACTOR COIL
- TWO WAY ISOLATOR
- EARTH CONNECTION
- PHOTO ELECTRIC CELL
- LINK
- ISOLATOR
- DIGITAL SMART METER EQUAL TO SCHNEIDER PM 5350
- SUPPLY AUTHORITY METER WITH CTs AND FUSES

### SECURITY SYMBOLS

- ELECTRIC LOCK WITH FREE TO EXIT HANDLE
- ELECTRIC STRIKE WITH FREE TO EXIT HANDLE
- MAGNETIC LOCK
- REED SWITCH
- PROXIMITY CARD READER
- CCTV SECURITY CAMERA
- I - DENOTES INTERNAL
- E - DENOTES EXTERNAL
- SECURITY KEY PANEL
- BREAK GLASS DOOR RELEASE BUTTON
- DOOR RELEASE PUSHBUTTON

### AUDIO VISUAL SYMBOLS

- MATV OUTLET
- MATV HEADEND LOCATION
- MATV SPLITTER LOCATION
- HDMI OUTLET INCLUDING CABLE FROM AV RACK LOCATION TO AV SCREEN LOCATION OR AV INPUT LOCATION TO AV RACK LOCATION
- 15 PIN VGA OUTLET INCLUDING CABLE FROM AV RACK LOCATION TO AV SCREEN LOCATION

### ABBREVIATIONS:

- AB DENOTES THE FITTING SHALL BE LOCATED ABOVE BENCH LEVEL
- CL DENOTES CLEANERS OUTLET
- CM DENOTES THAT THE FITTINGS SHALL BE MOUNTED TO THE CEILING
- CS DENOTES THE FITTING SHALL BE LOCATED IN THE CEILING SPACE
- D DENOTES THE FITTINGS ARE DIMMABLE
- FM DENOTES THAT THE FITTINGS SHALL BE MOUNTED IN THE FLOORSPACE
- HL DENOTES THE FITTING SHALL BE LOCATED AT HIGH LEVEL
- LL DENOTES THE FITTING SHALL BE LOCATED AT LOW LEVEL
- UB DENOTES THE FITTING SHALL BE LOCATED UNDER BENCH
- WP DENOTES THAT THE FITTING SHALL BE WEATHERPROOF
- WF DENOTES OUTLET FOR WIFI, WITHIN CEILING SPACE

### SITE PLAN NOTES

- THIS DRAWING SHALL BE READ IN CONJUNCTION WITH THE ELECTRICAL SERVICES SECTION OF THE SPECIFICATION, THE ARCHITECTURAL DRAWINGS AND ALL OTHER RELEVANT SERVICES DRAWINGS.
- REFER TO THE LEGEND AND LIGHT FITTING SCHEDULE.
- WHERE POSSIBLE, ALL POWER AND COMMUNICATION CONDUITS SHALL BE INSTALLED IN COMMON TRENCHES WITH THE OTHER SERVICES TRADES. ENSURE THAT THE MINIMUM REQUIRED CLEARANCE IS MAINTAINED BETWEEN SERVICES THAT RUN IN COMMON TRENCHES.
- CABLE PITS WITHIN PATHWAYS SHALL BE FINISHED FLUSH WITH THE FINISHED LEVEL OF THE INSITU CONCRETE, PAVING OR BITUMEN.
- ALL CONDUITS SHALL BE SEALED TO PREVENT THE INGRESS OF WATER AFTER INSTALLATION OF CABLING.
- LOCATIONS SHOWN ON DRAWING ARE INDICATIVE ONLY. FINAL LOCATIONS TO BE DETERMINED ON SITE.

REV.	DESCRIPTION	JRR	PGM	DATE
1	CONSTRUCTION ISSUE	JRR	PGM	08.09.15
0	CONSTRUCTION ISSUE	JRR	PGM	17.07.15
F	TENDER ISSUE	JRR	PGM	15.04.15
E	TENDER ISSUE	JRR	PGM	23.03.15

CLIENT :

Leichhardt Municipal Council  
7-15 Wetherill Street  
LEICHHARDT NSW 2040

ARCHITECT :

**Dillon & Savage Architects**  
40 Quinton Rd, Manly, 2095  
Phone: (02) 9977 3714 Fax: (02) 9977 8215  
email: dsarchts@bigpond.net.au



PROJECT:  
LEICHHARDT PARK CHILD CARE

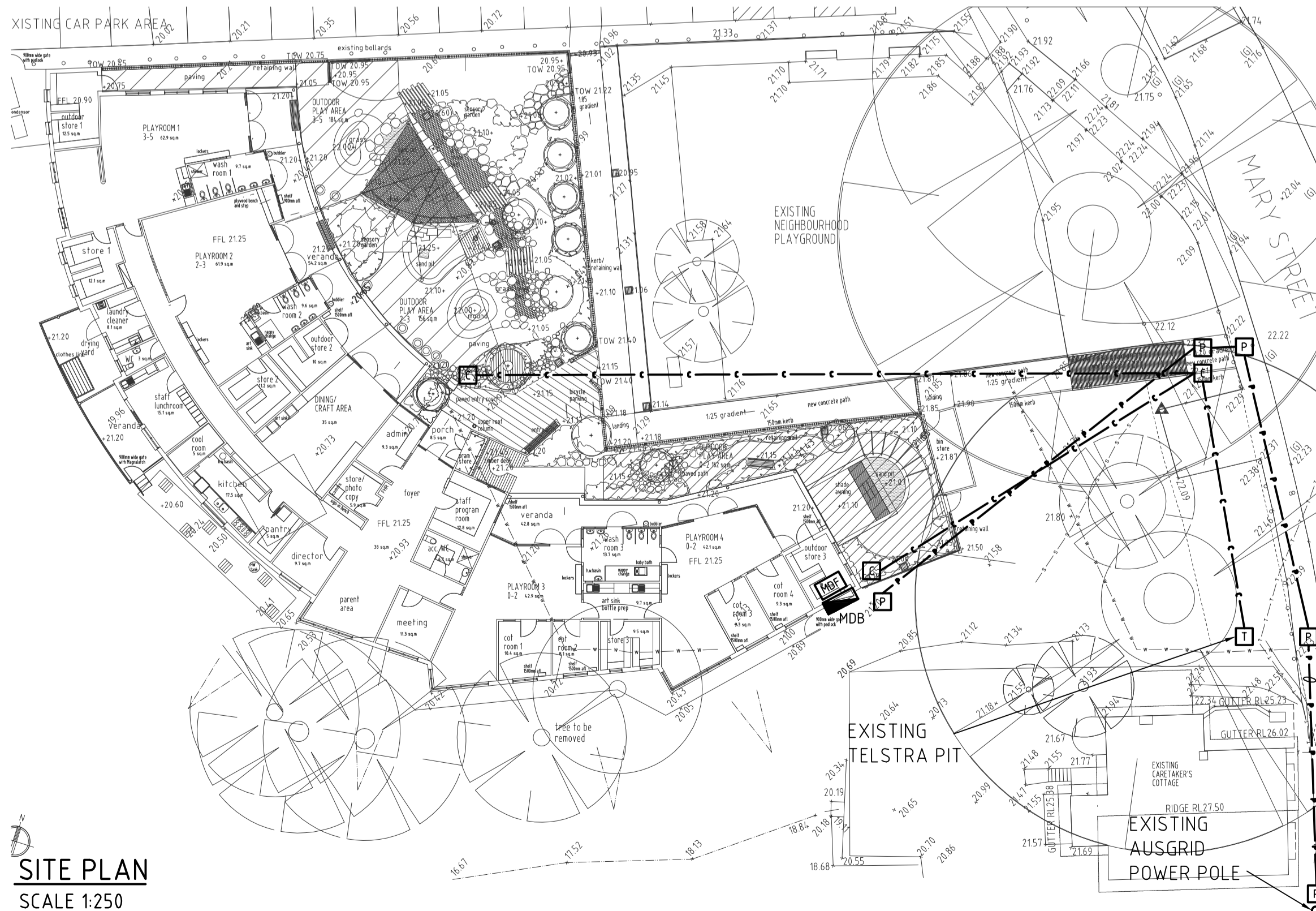
TITLE:  
ELECTRICAL SERVICES  
LEGEND  
SITE PLAN

## FOR CONSTRUCTION

DESIGNED : PGM	VERIFIED :	PGM
DRAWN : MPH	APPROVED FOR TENDER :	PGM
SCALE : N.T.S.	APPROVED FOR CONSTRUCTION :	PGM

CAD FILE: E-001-LEGEND.dwg PLOT DATE/TIME: 09.09.16 12:34 PM

PROJECT No. <b>26687-SYD</b>	DRAWING No. <b>E-001</b>	REVISION <b>1</b>
---------------------------------	-----------------------------	----------------------



SITE PLAN  
SCALE 1:250