

LIGHTING

- 2x28W T5, SURFACE MOUNTED LUMINAIRE, IP44, COMPLETE WITH MOUNTING BRACKETS AND MOUNTING GEAR, 4000K. EAGLE LIGHTING - FAGERHULT ALLFIVE CLEAR 33509
- 1x28W T5, SURFACE MOUNTED LUMINAIRE, IP65, COMPLETE WITH MOUNTING BRACKETS AND MOUNTING GEAR, 4000K. PIERLITE - VANDALUX
- 15W LED, SURFACE MOUNTED LUMINAIRE, IP65, COMPLETE WITH MOUNTING BRACKETS AND MOUNTING GEAR, 400K. VERSALUX - KIRK 540002
- 2x18W FLUORESCENT, WALL MOUNTED LUMINAIRE, IP65, COMPLETE WITH MOUNTING BRACKETS AND MOUNTING GEAR, 4000K. VERSALUX - MEMI 496000
2100 DENOTES MOUNTING HEIGHT (mm) AFFL
- 10W LED, WALL MOUNTED LUMINAIRE, IP65, COMPLETE WITH MOUNTING BRACKETS AND MOUNTING GEAR, 4000K. VERSALUX - ECLIPSE 542002
- PRESENCE DETECTORS, SURFACE MOUNTED. MYSMART SURFACE MOUNTED PART #: EBD5M-PRM
- PRESENCE DETECTORS, SURFACE MOUNTED, IP55. MYSMART SURFACE MOUNTED PART #: EBD5M-PRM-IP
- LED EMERGENCY LIGHTING SPIT FIRE WITH 2HR BATTERY TO AS2293. FAMCO OR APPROVED EQUIVALENT. D DENOTES ACRYLIC DOME
- IP65 OR IP56 RATED EXIT LIGHT WITH 2HR BATTERY TO AS2293. FAMCO OR APPROVED EQUIVALENT.
- IP65 OR IP56 RATED DIRECTIONAL EXIT LIGHT WITH 2HR BATTERY TO AS2293. FAMCO OR APPROVED EQUIVALENT.

SWITCHING & CONTROLS

- SWITCH & SWITCH WIRE
2W = TWO WAY SWITCH
INT = INTERMEDIATE SWITCH
- EXTERNAL LIGHTING CONTROL. PE CELL WITH TIME SWITCH OVERRIDE

POWER

- EXISTING MAINSWITCH BOARD (MSB)
- PROPOSED DISTRIBUTION BOARD (DB)
- DOUBLE GENERAL PURPOSE SOCKET OUTLET
- SINGLE GENERAL PURPOSE SOCKET OUTLET
- PERMANENTLY CONNECTED ISOLATOR
3N DENOTES THREE PHASE PLUS NEUTRAL,
1N DENOTES ONE PHASE PLUS NEUTRAL
20A DENOTES RATING

- DBX-XXX-Y CIRCUIT DESIGNATION
DBX-XXX-Y
↑ NO. OF POLES OCCUPIED
↑ CIRCUIT NUMBER
↑ DISTRIBUTION BOARD NUMBER

COMMUNICATIONS

- EXISTING COMMUNICATIONS PIT
- TELEPHONE OUTLET WITH ONE (1) PAIR CAT 3 CABLING

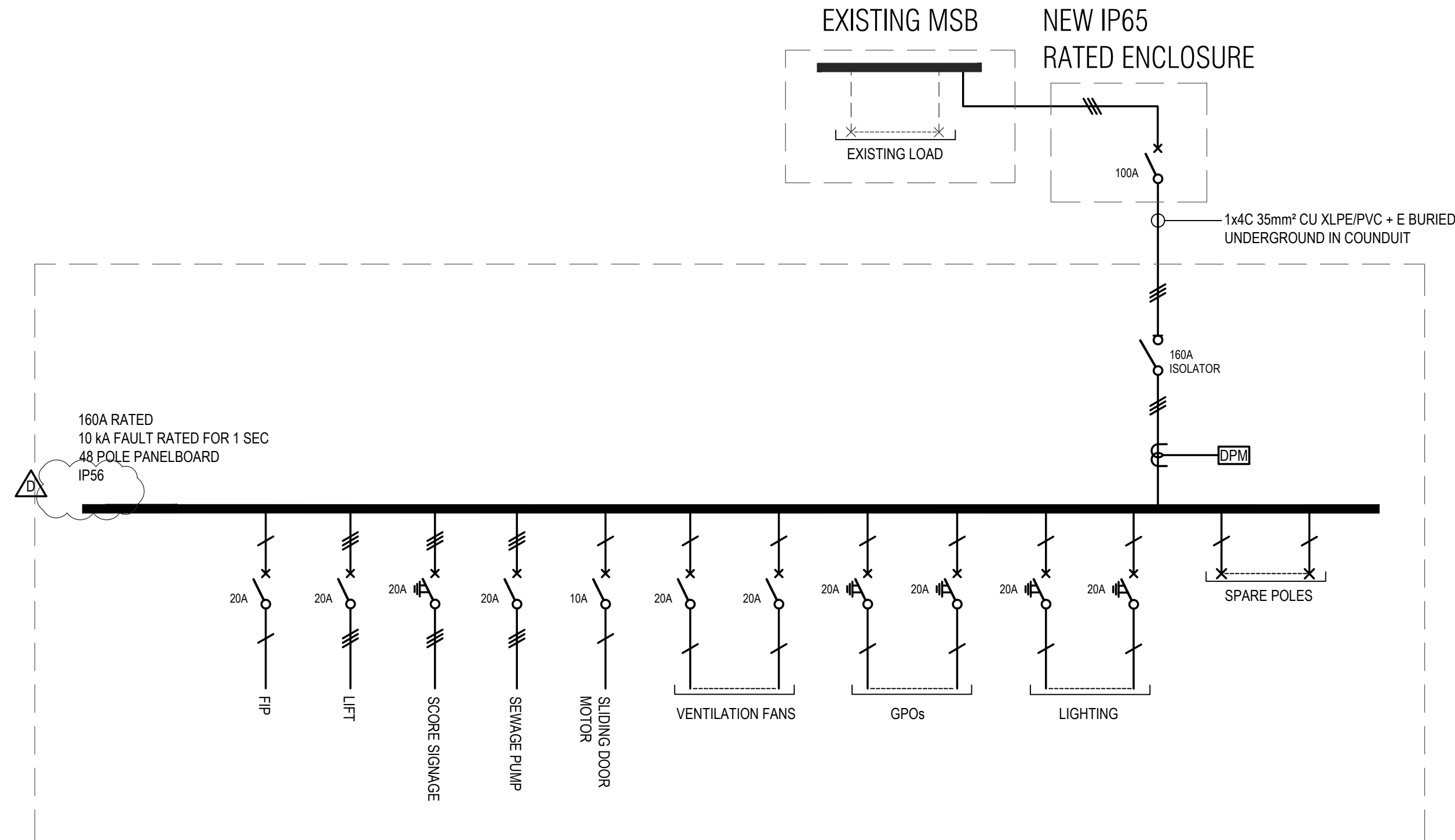
MDF MAIN DISTRIBUTION FRAME

SINGLE LINE DIAGRAM

- ISOLATOR/SWITCH
- CIRCUIT BREAKER
- 30mA RCD CIRCUIT BREAKER
- SINGLE PHASE
- THREE PHASE
- CURRENT TRANSFORMER
- DIGITAL POWER METER/EQUIVALENT TO SCHNEIDER PM5340

ABBREVIATIONS

- WP WEATHERPROOF IP65 OR IP56
- HWU HOT WATER UNIT
- 25A CURRENT RATING
- PUMP ELECTRICALLY POWERED PUMP
- TEF TOILET EXHAUST FAN
- 1100 MOUNTING HEIGHT IN TERMS OF mm AFFL
- CL CLEANERS' OUTLET
- EF EXHAUST FAN
- AB MOUNTED AT 150mm ABOVE BENCH
- ZIP ZIP UNIT
- BBQ BARBEQUE
- S SENSOR
- FIP FIRE INDICATOR PANEL



**NEW DB-1
SINGLE LINE DIAGRAM**

POWER NOTES (TYPICAL):

1. ABOVE SINGLE LINE DIAGRAM IS NOT TO BE TAKEN AS EXHAUSTIVE, SHOWN FOR CONSIDERATION ONLY.
2. CIRCUIT BREAKER RATINGS NOTED ARE INSTALLED FULL LOAD RATINGS. SIZE ACTUAL CIRCUIT BREAKERS ALLOWING FOR DERATING FACTORS. PROVIDE CALCULATIONS TO DEMONSTRATE FINAL SELECTION.
3. CIRCUIT BREAKERS SHALL PROVIDE FULL DISCRIMINATION.
4. CIRCUIT BREAKERS SHALL PROVIDE FAULT LEVEL CASCADE PROTECTION TO ENABLE THE USE OF 10KA MINIATURE CIRCUIT BREAKERS.
5. SUB-MAINS CABLE SHALL BE INSTALLED IN ACCORDANCE WITH AS3008.
6. SEPARATE EARTH CABLES SHALL BE PROVIDED IN ACCORDANCE WITH AS/NZS3000 TABLE 5.1.
7. SUB-MAINS CABLE IDENTIFICATION TAGS SHALL BE PROVIDED AT SOURCE, TERMINATION AND ON EITHER SIDE OF ANY BARRIER.
8. MAXIMUM FINAL SUB-CIRCUIT LENGTH SHALL BE IN ACCORDANCE WITH AS/NZS3000 TABLE B5.1 FOR TYPE C MCB'S. TYPICALLY ACTIVE 2.5 sq. mm. Cu PVC/PVC, EARTH 2.5 sq. mm PVC/PVC, 20A 68m.
9. MAXIMUM FINAL SUB-CIRCUIT VOLTAGE DROP SHALL NOT EXCEED 2.5%
10. SOCKET OUTLETS: IN GENERAL FINAL SUB-CIRCUITS SHALL NOT SERVE AREAS ON MORE THAN ONE LEVEL. CLEANERS AND MAINTENANCE SOCKET OUTLETS SHALL BE DEDICATED CIRCUITS. MAXIMUM 16 SOCKET OUTLETS PER FINAL SUB-CIRCUIT. SOCKET OUTLETS SUPPLYING NAMED EQUIPMENT SHALL BE SUPPLIED VIA SEPARATE DEDICATED FINAL SUBCIRCUITS. FOR EXAMPLE: HWU/BWU, MATV, SECURITY, COMMS EQUIPMENT ETC.
11. ENSURE ALL THERMAL OR ACOUSTIC INSULATION MATERIALS, OTHER THAN THOSE THAT ARE FULLY ENCLOSED WITHIN PARTITION LININGS, ARE PHYSICALLY SECURE SO AS NOT TO BE DISLODGED DURING NORMAL USE AND MAINTENANCE OF THE BUILDING.

Rev.	Date	Description	Des.	Verif.	Appd.
D	08.09.2016	CONSTRUCTION ISSUE	C.H.	V.S.	B.P.
C	11.04.2016	CONSTRUCTION CERTIFICATE ISSUE	C.H.	V.S.	B.P.
B	18.03.2016	CONSTRUCTION CERTIFICATE ISSUE	C.H.	V.S.	B.P.
02	14.03.2016	PRELIMINARY ISSUE FOR COMMENT	C.H.	V.S.	B.P.
A	27.10.2015	TENDER ISSUE	C.H.	V.S.	B.P.
01	08.09.2015	PRELIMINARY ISSUE	C.H.		

© Cardno Limited All Rights Reserved.
This document is produced by Cardno Limited solely for the benefit of and use by the client in accordance with the terms of the retainer. Cardno Limited does not and shall not assume any responsibility or liability whatsoever to any third party arising out of any use or reliance by third party on the content of this document.

Cardno (NSW/ACT) Pty Ltd | ABN 95 001 145 035
Level 9, The Forum, 203 Pacific Highway
St Leonards, NSW 2065
Tel: 02 9496 7700 Fax: 02 9439 5170
Web: www.cardno.com.au

Drawn	Date	Client
C.O.	Sept '16	BRIARS SPORTING CLUB
Checked	Date	Project
M.D.	Sept '16	COMMUNITY AND AMENITIES BUILDING
Designed	Date	ROTHWELL PARK, CONCORD
C.O.	Sept '16	
Verified	Date	Title
L.K.K.	Sept '16	ELECTRICAL SERVICES
Approved		LEGEND AND SINGLE LINE DIAGRAM
B.P.	Sept '16	

Status	Scale	Size
FOR CONSTRUCTION	NTS	A1
Drawing Number	Revision	
80816048-EL-0001	D	